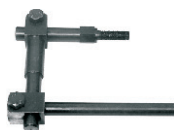
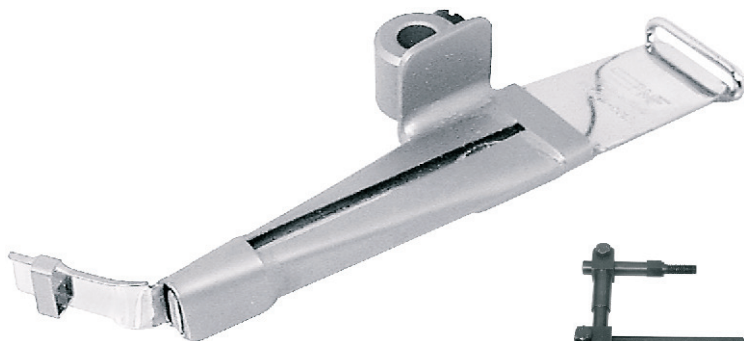


# F1065

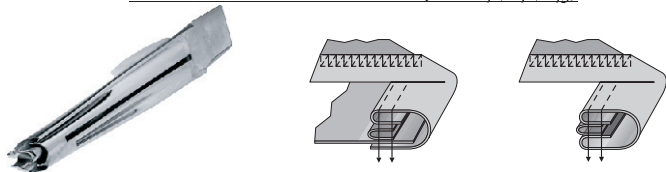
## GUIDA INSERIMENTO PROFILO

*Per macchine piane  
For flat bed machines*

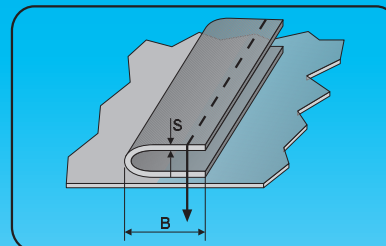


Consultare pag. C96 per la panoramica degli attacchi da utilizzare.  
*Pls. see pag. C96 for all brackets to be used*

**ABBINABILE CON BORDATORI PER COLLARETTO (TIPO F40, F42, F43)**  
*USABLE WITH COLLARETTE BINDERS (TYPE F40, F42, F43)*



### PIPING ATTACHMENT



Codice	Entrata (A) (tape size)		Lav. finito (B) (finished size)		Spessore (S) (thickness)
	(mm)	(inch)	(mm)	(inch)	
<b>F1065/15L</b>	15	19/32	7,5	19/64	L
<b>F1065/15M</b>	15	19/32	7,5	19/64	M
<b>F1065/20L</b>	20	25/32	10	25/64	L
<b>F1065/20M</b>	20	25/32	10	25/64	M
<b>F1065/20H</b>	20	25/32	10	25/64	H
<b>F1065/25L</b>	25	1	12,5	1/2	L
<b>F1065/25M</b>	25	1	12,5	1/2	M
<b>F1065/25H</b>	25	1	12,5	1/2	H
<b>F1065/28L</b>	28	1-1/8	14	9/16	L
<b>F1065/28M</b>	28	1-1/8	14	9/16	M
<b>F1065/30L</b>	30	1-3/16	15	19/32	L
<b>F1065/30M</b>	30	1-3/16	15	19/32	M
<b>F1065/30H</b>	30	1-3/16	15	19/32	H
<b>F1065/35M</b>	35	1-3/8	17,5	11/16	M
<b>F1065/35H</b>	35	1-3/8	17,5	11/16	H
<b>F1065/40M</b>	40	1-9/16	20	25/32	M
<b>F1065/40H</b>	40	1-9/16	20	25/32	H