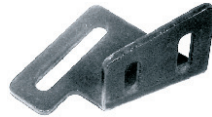
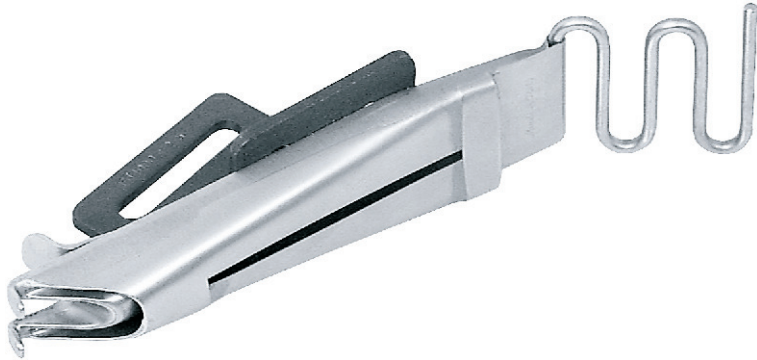
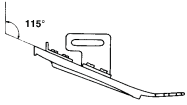


# F34000

**BORDATORE AD ANGOLO  
PIEGA SEMPLICE (115°)**

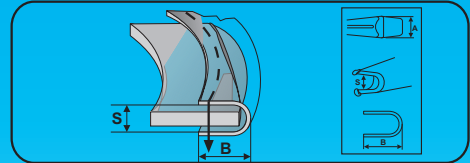
*Per macchine triplice trasporto  
For walking foot machines*



F34000A - staffa  
- bracket



RIGHT ANGLE SINGLE BINDER (115°)



| Codice      | (A) | (S) | (B)  | Codice      | (A) | (S) | (B)  |
|-------------|-----|-----|------|-------------|-----|-----|------|
|             |     |     |      |             |     |     |      |
| F34000/14x4 | 14  | 4   | 5    | F34000/28x5 | 28  | 5   | 11,5 |
| F34000/14x5 | 14  | 5   | 4,5  | F34000/28x6 | 28  | 6   | 11   |
| F34000/15x5 | 15  | 5   | 5    | F34000/28x7 | 28  | 7   | 10,5 |
| F34000/16x4 | 16  | 4   | 6    | F34000/28x8 | 28  | 8   | 10   |
| F34000/16x5 | 16  | 5   | 5,5  | F34000/30x4 | 30  | 4   | 13   |
| F34000/16x6 | 16  | 6   | 5    | F34000/30x5 | 30  | 5   | 12,5 |
| F34000/18x4 | 18  | 4   | 7    | F34000/30x6 | 30  | 6   | 12   |
| F34000/18x5 | 18  | 5   | 6,5  | F34000/32x4 | 32  | 4   | 14   |
| F34000/18x6 | 18  | 6   | 6    | F34000/32x5 | 32  | 5   | 13,5 |
| F34000/20x4 | 20  | 4   | 8    | F34000/32x6 | 32  | 6   | 13   |
| F34000/20x5 | 20  | 5   | 7,5  | F34000/35x4 | 35  | 4   | 15,5 |
| F34000/20x6 | 20  | 6   | 7    | F34000/35x5 | 35  | 5   | 15   |
| F34000/20x7 | 20  | 7   | 6,5  | F34000/35x6 | 35  | 6   | 14,5 |
| F34000/22x4 | 22  | 4   | 9    | F34000/40x4 | 40  | 4   | 1    |
| F34000/22x5 | 22  | 5   | 8,5  | F34000/40x5 | 40  | 5   | 17,5 |
| F34000/22x6 | 22  | 6   | 8    | F34000/40x6 | 40  | 6   | 17   |
| F34000/22x7 | 22  | 7   | 7,5  | F34000/45x4 | 45  | 4   | 20,5 |
| F34000/24x6 | 24  | 6   | 9    | F34000/45x8 | 45  | 8   | 18,5 |
| F34000/25x4 | 25  | 4   | 10,5 | F34000/50x4 | 50  | 4   | 23   |
| F34000/25x5 | 25  | 5   | 10   | F34000/50x8 | 50  | 8   | 21   |
| F34000/25x6 | 25  | 6   | 9,5  | F34000/60x4 | 60  | 4   | 28   |
| F34000/25x8 | 25  | 8   | 8,5  | F34000/60x6 | 60  | 6   | 27   |