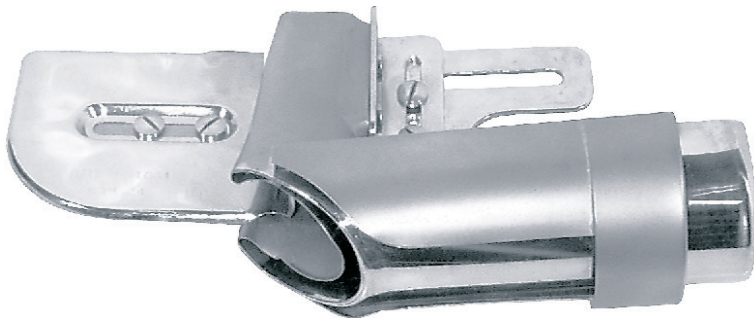


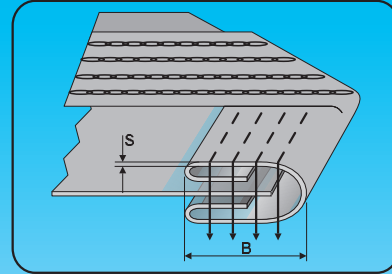
F31001

BORDATORE AD ANGOLO PER CINTURE - DOPPIA PIEGA

Per macchine a 4 aghi
For 4 needle machines



*DOUBLE ELBOW BINDER
FOR WAIST BANDS*



Codice	Entrata (A) (tape size) (mm) (inch)	Lav. finito (B) (finished size) (mm) (inch)	Spessore (S) (thickness)
F31001/60	60 2-3/8	22 7/8	L-M-H
F31001/65	65 2-9/16	23,5 15/16	L-M-H
F31001/70	70 2-3/4	25 1	L-M-H
F31001/75	75 3	27 1-3/32	L-M-H
F31001/80	80 3-3/16	28 1-1/8	L-M-MH-H
F31001/85	85 3-3/8	30 1-3/16	L-M-MH-H
F31001/90	90 3-9/16	32 1-1/4	L-M-MH-H-XH
F31001/95	95 3-3/4	36 1-7/16	L-M-MH-H
F31001/100	100 4	39 1-9/16	L-M-MH-H
F31001/105	105 4-3/16	43 1-23/32	L-M-MH-H
F31001/110	110 4-25/64	45 1-3/4	L-M-MH-H
F31001/120	120 4-25/32	50 2	L-M-H-XH
F31001/130	130 5-3/16	55 2-3/16	L-M-H
F31001/140	140 5-9/16	60 2-3/8	L-M-H

L'APPARECCHIO VIENE
FORNITO COMPLETO
DI ATTACCO UNIVERSALE

THE ATTACHMENT IS SUPPLIED
WITH UNIVERSAL BRACKET

tipo "UNIVERSALE"
"UNIVERSAL" type



F31001S

ATTACCO A RICHIESTA
UPON REQUEST BRACKET

tipo "RIMOLDI"
"RIMOLDI" type



F31001R