

Reverse twist point "LR" or "R TW"



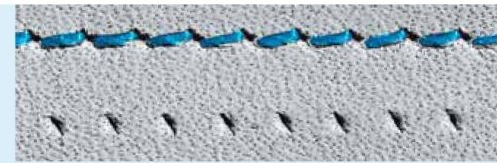
Product: Cutting point with a lens-shaped cross-section. The incision is made at a 45° angle to the direction of the seam.

Result: A decorative seam inclined slightly towards the left

Point symbol: Seam appearance:



Threading direction



Materials:

Suitable for all types of leather

Applications:

- Clothing industry
- Footwear manufacture

- Manufacture of bags, suitcases
- Manufacture of car seats

Highlight:

The best needle for decorative seams

37:20 DL1
135X16
DPX16

